

THE JAZZ GALLERY CULTURAL JAZZ VENUE

1160 BROADWAY at 27th ST, 5th fl, NEW YORK NY 10001

RENTAL SPECS

The Jazz Gallery performance space located at 1160 Broadway, 5th floor is approximately 1500 square feet of loft space with a Green Room, a small office, and a rest room area. The Jazz Gallery offers a unique space for private events, recordings, rehearsals, business meetings, photo/film shoots, concerts, conferences, seminars, classes, weddings, receptions, celebrations and functions of all kinds looking to distinguish themselves from the usual offerings.

The Jazz Gallery is located in New York's historic & bustling NoMad neighborhood; the Flatiron Building and Madison Square Park to our south, and the Empire State Building a few blocks to the north. Nestled in between these two iconic buildings are old merchant stores, exclusive boutiques, and many restaurants and hotels. The Jazz Gallery is located at 1160 Broadway, 5th floor. It can be reached by the N,R trains to 28th street, and is also short walk from both the 6 and the 1 at 28th street, as well as numerous other trains.

The space is available both short and long term, excluding Thursday, Friday and Saturday evenings. Long term lease available, rate negotiable.



Capacity and Set up:

The capacity for seating is 70 people. The Jazz Gallery provides chairs and 8 cabaret tables. There are also 4 folding tables 6 and 8 feet in length that are available for conference seating. The chairs and tables stack or fold to provide maximum floor space if needed.

The space is equipped with state of the art sound system and LED stage lighting. Baldwin Piano and Canopus drum set are also provided.

Rental Regulations:

The renter must abide by the rules and regulations of a non smoking building. They must provide liability insurance for the event or in the case of multiple events for the term of the sublease. A deposit will be required to hold the space and payment in full at the time of rental. Long term leases will be invoiced on a monthly basis.

The cost of piano tuning is additional.



Amenities at The Jazz Gallery

Approx. 1500 sq ft of loft space
Capacity of 70 people
8 x cabaret tables
70 x chairs
2 x 6' table
2 x 8' table
Central heat and A/C

Skylight
Sound paneling
Sound treated room and stage
Hardwood floors
1 office space
1 green room (can be used as additional office space)
bathroom and sink
elevator and wheelchair access



Backline at The Jazz Gallery

7 Foot Baldwin Grand Piano
Fender Rhodes
Aguilar DB410 Bass Cabinet
Aguilar TH500 Bass Amplifier
GK Backline 210 Bass Combo Amplifier
Mesa Boogie Mark III Guitar Amplifier
Fender Twin Reverb '65 Reissue Guitar Amplifier
1 Canopus 4-Piece Drumset (18 inch bass drum) with hardware
2 LP Percussion Congas
3 Shure SM58 microphones (one with on/off switch)
2 Audio Technica AT2010 Condenser microphones
2 CAD M179 Condenser Microphones
3 assorted DI boxes
9 assorted music stands
Sony DMX R-100 Mixer
2 Mackie SA1530Z PA Loudspeakers
2 Yamaha monitors

The renter is responsible for the equipment. Any missing parts or cables must be replaced prior to load out date.



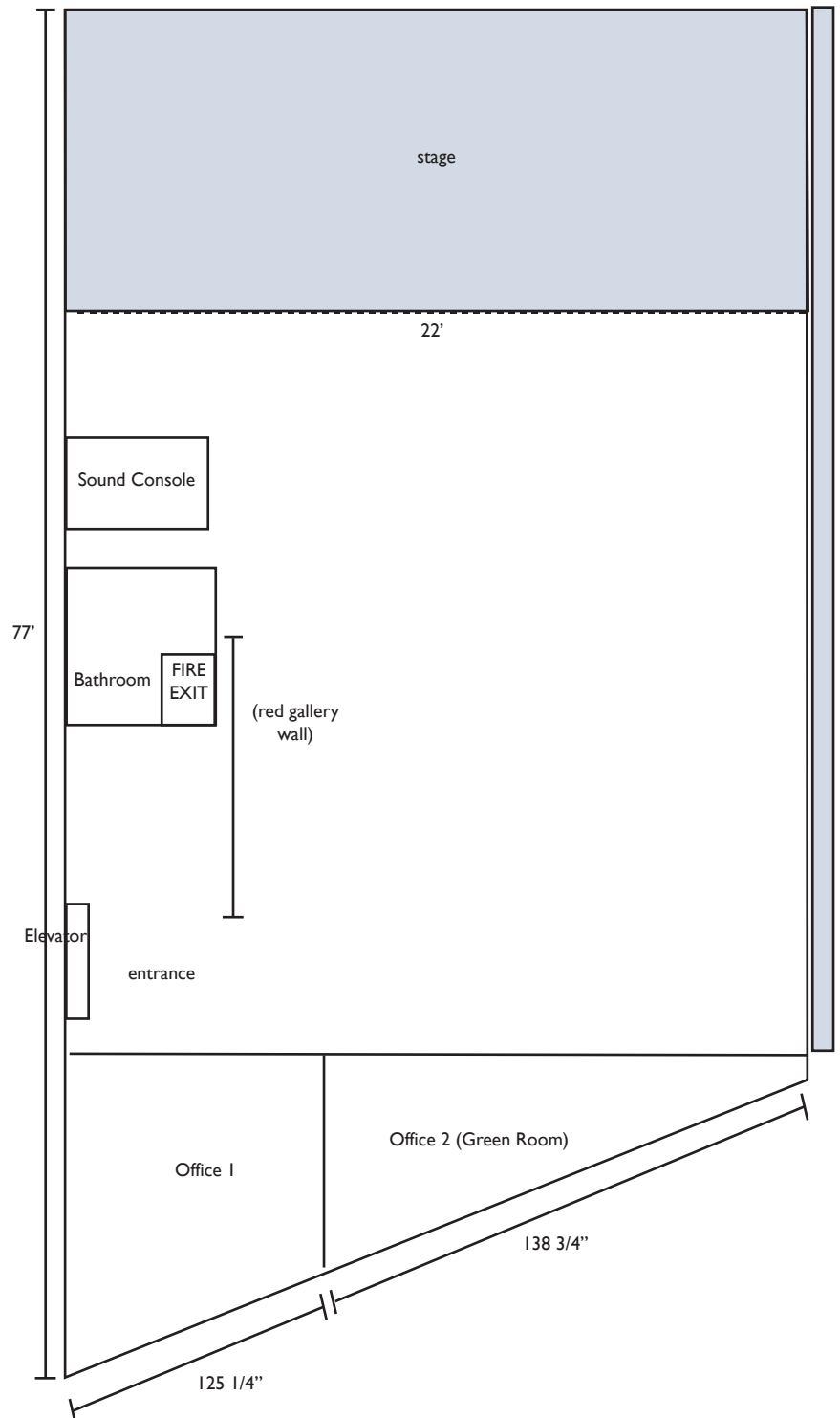
General Information

Performance Space Address:
1160 Broadway (at 27th st) 5th fl
New York NY 10001

Mailing address:
PO Box 153
Lenox Hill Station NY 10021

The Jazz Gallery is a flexible performance space that seats up to 72 seats.

Dimensions:
East-West - 77'
North-South - 22'



Rates

Day Time Rates:

8am to 12noon daily- \$600

12noon to 4pm daily- \$600

8am to 4pm daily - \$1000

8am to 4pm 2 day package - \$1600

Evening Rates:

4pm to 12am (Sunday - Wednesdays) \$1700

4pm to 12am (Thursday-Saturday) \$3000

4pm to 12am two consecutive evenings (Sunday - Wednesday) \$2500

Day and Evening Combined Rates:

8am to 12am (Sunday - Wednesday) \$2500

8am to 12am 2 day combination (Sunday-Wednesday) \$4000

Additional rates for long term arrangements, upon demand

Packages include the use of the space (heating and AC), sound system, drum set, stage, stage lighting, piano (additional \$150 tuning fee). 70 Chairs, 8 cabaret tables, 4 folding 6 ft tables. There will be two staff members (additional staff can be arranged at \$75 per 4 hour shift) to assist in the set-up of the stage, amplification and microphones and overall sound and lighting.

Should there be food and beverage served, the renter is responsible for set-up and tear down. A cleaning fee of \$75 will also be charged. There is a refrigerator available for chilling beverages.

The transport of any equipment or furnishings other than that which can be carried into the venue must be thoroughly detailed and special arrangement will have to be made.

Liability Insurance must be obtained to hold The Jazz Gallery and May Plaza Enterprises non liable. It can be obtained through www.eventhelper.com at a reasonable daily rate.

A 50% deposit is required upon booking.

Please contact Janet Luhrs: jaluhrs@aol.com or 212 861 5617